

SPEC SHEET + MEASUREMENTS

SPORT-TEK

Sport-Tek® Women's Halftime Stripe Long Sleeve V-Neck Tee. LST6043

Product photo



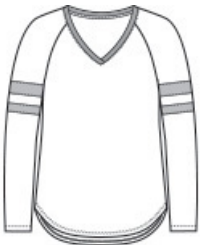
Show off your team spirit with this fashion-inspired tee.

- 4.5-ounce, 60/40 combed ring spun cotton/polyester
- V-neck
- Self neck tape
- Tear-away label
- Crossover at center neck trim
- Raglan sleeves
- Colorblock detail at neck and sleeve stripes
- Curved hem with slight drop at back

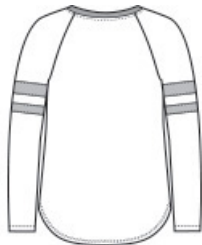
CARE INSTRUCTIONS

Machine Wash Cold With Like Colors. Non-Chlorine Bleach When Needed. Tumble Dry Low. Cool Iron If Necessary.

Sketches



front



back

SPEC SHEET + MEASUREMENTS



Sport-Tek[®] Women's Halftime Stripe Long Sleeve V-Neck Tee. LST6043

PRODUCT MEASUREMENTS

	XS	S	M	L	XL	XXL	3XL	4XL
Body Length at Back	27	27 1/2	28	28 1/2	29	29 1/2	30	30 1/2
Bust	18	19	20	21 1/2	23	24 1/2	26 1/2	28 1/2
Raglans and Dolmans Sleeve Length	30 1/4	30 3/4	31 1/4	31 7/8	32 1/2	33 1/8	33 1/2	33 7/8

Body Length at Back: Measured from high point shoulder to finished hem at back.

Bust: Measured across the chest one inch below armhole when laid flat.

Raglans and Dolmans Sleeve Length: Measure from neck edge to finished hem.

SIZE CHARTS

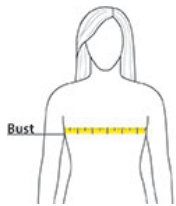
	XS	S	M	L	XL	XXL	3XL	4XL
Size	2	4/6	8/10	12/14	16/18	20/22	24/26	28/30
Bust	32-34	35-36	37-38	39-41	42-44	45-47	48-51	52-55

SPEC SHEET + MEASUREMENTS



Sport-Tek® Women's Halftime Stripe Long Sleeve V-Neck Tee. LST6043

HOW TO MEASURE



BUST

Measure under the arm and around the fullest part of the bust with arms down, keeping tape horizontal.

COLORS



Black/ Vintage
Heather
PMS BLACK
C



True Navy/
Vintage
Heather
PMS 533C



True Royal/
Vintage
Heather
PMS 7687C



Vintage
Heather/ Ecru
PMS 4195C



White/ Vintage
Heather
PMS 4195C